

Multi-Partition Domino Single System Configuration

Composed by:

Andy Pedisich
Technotics, Inc.

1. Introduction

This document describes the configuration of a laptop, desktop, or server Wintel system to support multiple Domino partitions that can communicate with each other regardless of whether the system is plugged into a network or not plugged into a network.

2. Overall Principal

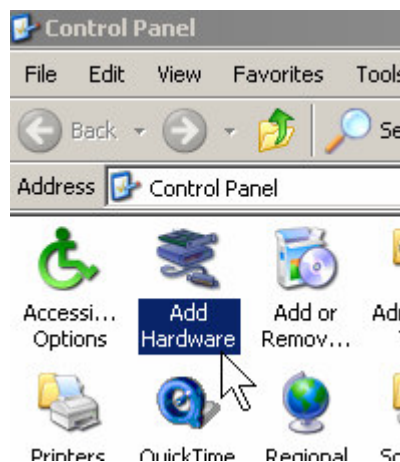
This configuration uses very standard and available techniques, but arranged in a way that is not widely done.

In order for the servers and clients to converse, they all need separate network adapters with their own IP addresses. This is done using Microsoft loopback adapters which provide virtual network devices.

I have found that special consideration must be given if installing a Domino Sametime server. IBM/Lotus indicates that you cannot install Sametime in a partitioned environment. In truth, this can be done, but it requires special steps that I spell out at the end of the document.

3. Installing Loopback Adapters

1. Open to the Control Panel and open the Add New Hardware icon.



Installing Multiple Domino Partitions for Testing

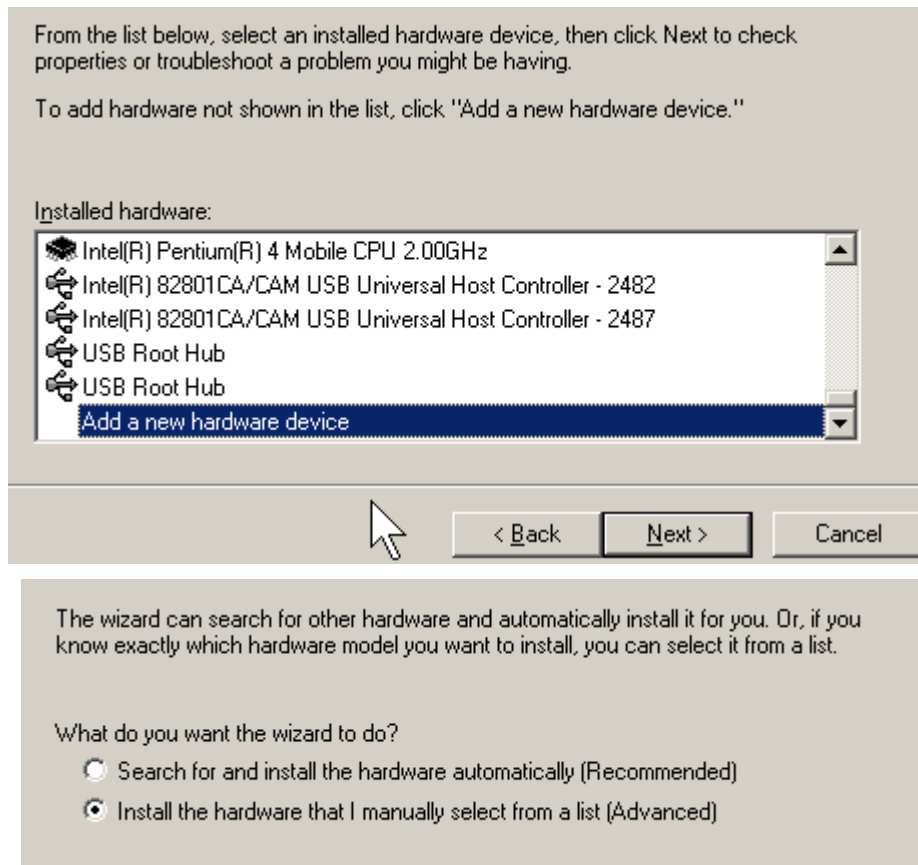


2. Indicate that you have already installed the hardware and click Next.



3. At the bottom of the list will be the "Add new hardware" choice. Then, choose to "Install hardware that I manually pick from list."

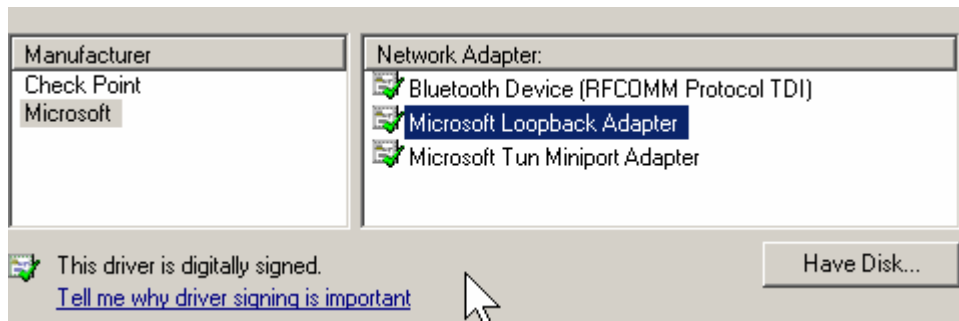
Installing Multiple Domino Partitions for Testing



4. You will be taken to a screen that lets you choose the hardware you have installed." Then choose Network adapters, and for the vendor, choose Microsoft, and then Microsoft Loopback Adapters. Install a loopback adapter for each one of the Domino partitions you plan on installing.

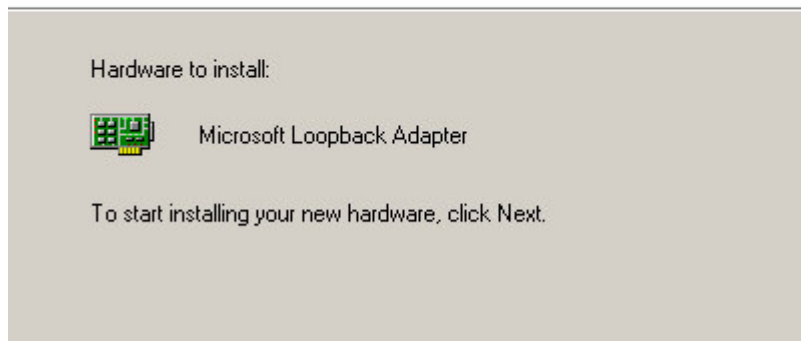


Installing Multiple Domino Partitions for Testing



Add Hardware Wizard

The wizard is ready to install your hardware



Completing the Add Hardware Wizard

The following hardware was installed:

Microsoft Loopback Adapter

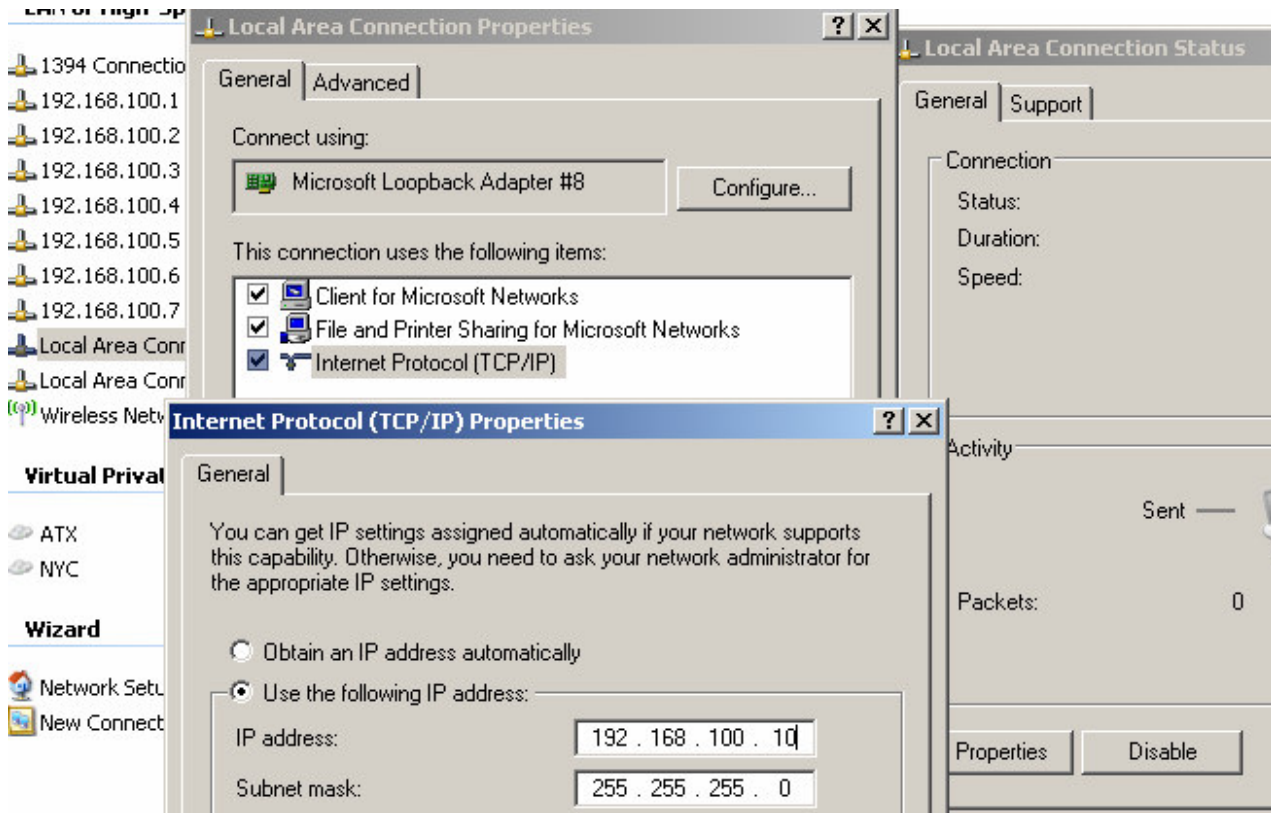
Windows has finished installing the software for this device.

LAN or High-Speed Internet

1394 Connection dhcp	1394 Net Adapter
192.168.100.1 Admin01	Microsoft Loopback Adapter
192.168.100.2 IMail01	Microsoft Loopback Adapter #2
192.168.100.3 Mail02	Microsoft Loopback Adapter #3
192.168.100.4 Mail03	Microsoft Loopback Adapter #4
192.168.100.5 mail04	Microsoft Loopback Adapter #6
192.168.100.6 web01	Microsoft Loopback Adapter #7
192.168.100.7 - db2app	Microsoft Loopback Adapter #5
Local Area Connection	Microsoft Loopback Adapter #8
Local Area Connection dhcp	3Com 3C920 Integrated Fast Ethernet C..
Wireless Network Connection	Dell TrueMobile 1150 Series Wireless LAN

- Determine IP addresses for each of the Domino partitions you are going to install, and manually assign these addresses to the loopback adapters.

Installing Multiple Domino Partitions for Testing



6. Loopback adapters will use an automatically assigned address if you don't manually assign them, and the automatic one will change each time you re-boot. You don't want that to happen. You can use the 192.168.100.# series as they are generally not used commercially.
7. At this point you should really be keeping track of everything by writing it all down. Track the loopback name and the IP address. You can even re-name the loopback with the server's name that uses it to make it easier to understand.
8. Next, de-install Domino if it's already on there, and then re-install making sure you choose "Partitioned Servers". You will be prompted for a single location for the Domino program files. Each of your partitions will be in its own data directory.
9. Add this to each of the server's Notes.ini

```
TCPIP_TCPIPAddress=0,192.168.100.#
```

That last number will be the ip address of the server whose Notes.ini you are installing.

10. To finish up, add all the ip addresses and server names to an LMHosts file on the system you are on so that all servers can reach each other by name and so the Notes client knows where everything is found.
11. If you need each server to be a web server, you will need to modify the server document's Internet Protocols HTTP tab a field called "Bind to Host name" and you will need to provide a fully qualified domain name such as usphladmin01.theviewlab.com in the host name field in the Internet Protocols HTTP tab and in the servers basic's tab.

Installing Multiple Domino Partitions for Testing

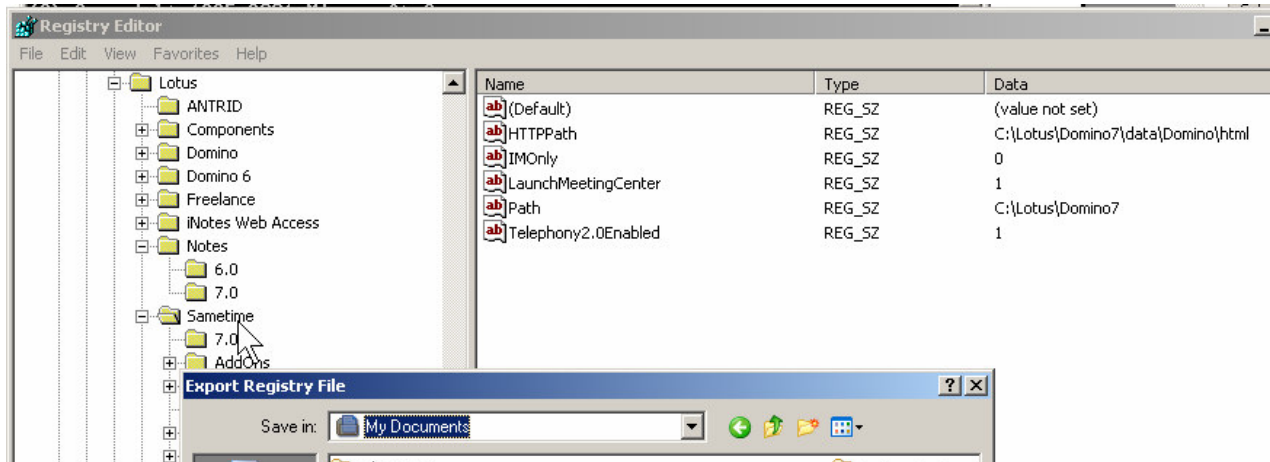
12. You must also use the hosts. file or dns rather than LMHosts to provide name resolution for each of the web servers you wish to use.
13. Use the fully qualified DNS name that you have in the hosts file in the network address field, and any other place you might be tempted to use a hard coded IP address.

4. Special Considerations for a Sametime Server

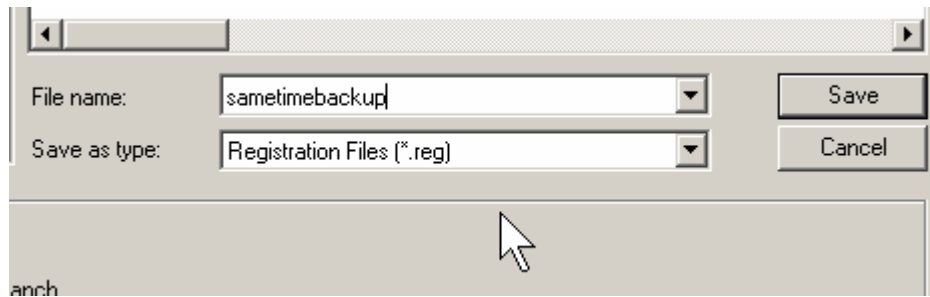
If you want one of the servers to be a Sametime server, it has to be the first one installed. Then, after installation you must save the Lotus registry entries and re-name the subdirectories before you add the other Domino partitions.

The following steps worked for me.

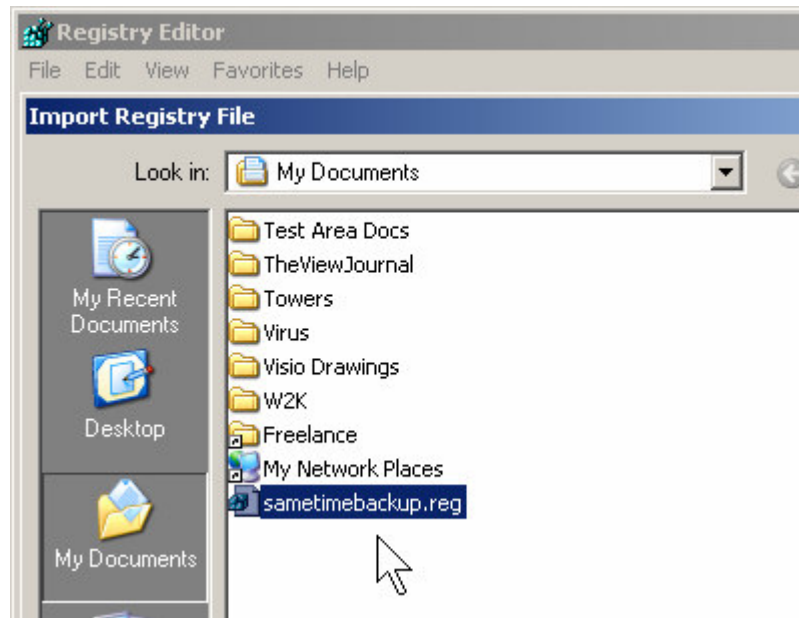
1. Install the Domino server you want to use for Sametime into Lotus\Domino8 and the data into Lotus\Domino8\Data.
This will place the Notes.ini into the Lotus\Domino8 folder. Leave it there.
2. Do the setup for the server following the network address stuff that I outlined above.
3. Install the Sametime Server.
4. Ensure that everything works! That means Domino, Sametime, and Lotus Notes reaching them both. You can even install the Sametime connect client, if you wish. That will give you three ways of having a Sametime conversation for testing purposes.
5. Shut down the server.
6. Rename the Lotus\Domino8 folder to something else, like Lotus\Domino8Safe.
7. Backup the registry for Lotus as shown here.



Installing Multiple Domino Partitions for Testing



8. Install your other Domino partitions in the Lotus\Domino8P subdirectory structure. (The P stands for Partitions!)
9. Get them all working.
10. Rename the Lotus\Domino8Safe subdirectory back to Lotus\Domino8.
11. Restore that regedit key you created before you installed the additional Lotus\Domino8P servers.



12. Start them all up, but always start with the Sametime server because it takes the most resources.
13. You might want to remove the STADDIN task from the notes.ini of the server and only start Sametime manually by giving the command LOAD STADDIN when you really need it.

Andy Pedisich
Technotics, Inc.

<http://www.technotics.com>